

Industrial Flowmeter

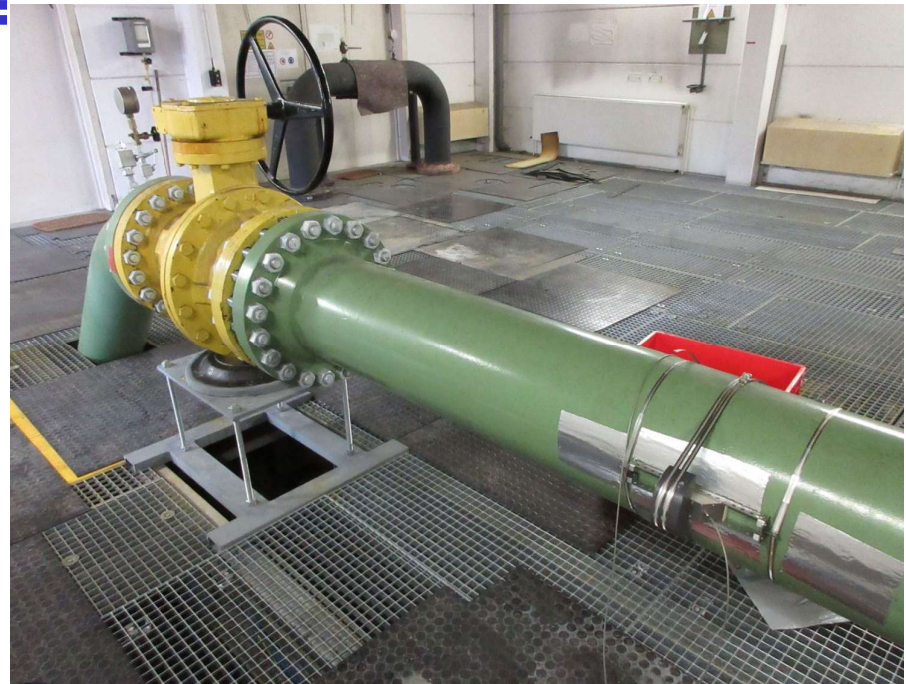
Clamp-on Gas

Clamp on gas

- **Most sophisticated technology, low signal, high noise**
- **Auto-optimizer is perfect for this technology!!!**
- **system's installation tools are very simple and stable**
- **Installation needs more quality than clamp-on liquid!**
- **Steel-pipes: min pressure 5barg, plastic 1barg**

Clamp on gas applications:

- **Natural Gas HP Pipeline**
- **Natural Gas MP district pipeline**
- **Pressurized air**
- **Fracking / Wellhead**



deltawaveC

Industrial Flowmeter

Clamp-on Gas

Clamp on gas advantages

- No cutting of the pipe
 - No pressure loss
 - No wear and tear
 - Easy to install (2h) (needs more precision as for clamp on liquid, Z-Mode)
-
- DN40 to DN600
 - 3 transducer types
 - Accets p&T input for mass flow calculation
 - AGA / GERG included



Industrial Flowmeter

Clamp-on Gas

Status:

- **currently only fixed meter (Basis deltawave2)**
- **3 types of trasducers, 0,3 / 0,5 and 1Mhz, same Geometry.**
- **Trasducertype selected by pipe wall thickness (not diameter)**
- **Basic Budget Price (List): 6.200 EUR +**

Outlook:

- **Ex for Trasducers (Zone I) expected by the end of 2021**
- **Ex for Electronics (Zone 1) in Eexd housing by the end of 2021**
- **Ex for Electronics (Zone 2, SS Housing) Expected for End 2021**
- **Portable/ deltawaveC-Hardware: Expected for Spring 2022**

Industrial Flowmeter Clamp-on Gas

Clamp-on gas:

- **DN40-DN600**
- **5barg-500barg**
- **-40..80°C**
- **All Gases (Gerg/AGA included)**
- **With p&T input for mass flow calculation**
- **2-30mm wall thickness, 3 transducers**

